



# Ambelt®

## Förderbänder

---

Ambelt® is your reliable partner for DIN standard conveyor belts and components for regionally, nationally and internationally operating vulcanizing and trading companies as well as plant manufacturers of the bulk material sector.

We provide our customers with rubber conveyor belts and wear protection material stocked in four national warehouses.

Ambelt® guarantees DIN-fabrication according to the strict ISO standards as well as high quality standards, technological competence and profound market experience.

On top, Ambelt® offers a wide product portfolio with regards to conveyor systems; i.e. rubber conveyor belts in diverse specifications, wear protection rubber sheets, impact bars, rollers, pulleys as well as repair material.

# Ambelt®

## list of products

---

### Conveyor belts 04 – 21

Textile conveyor belts .....	06
Oil resistant conveyor belts .....	08
Heat resistant conveyor belts .....	09
Flame-retardant conveyor belts .....	09
Chevron belts .....	10
Sidewall belts .....	16
Sliding conveyor belts .....	18
Elevator belts .....	19
Special belts .....	19
Steel cord belts .....	20
Light conveyor belts .....	21

---

### Wear protection 22 – 29

Ambelt® 45 / Ambelt® 65 / Ambelt® 60 Super .....	24
Ambelt® Para and Para Super .....	25
Ambelt® Prema Super .....	26
Ambelt® dust sealing .....	27
Ambelt® skirting rubber .....	28
Ambelt® Ceramic wear protection sheets .....	29

---

### Conveyor components 30 – 39

Gurtec rollers and roller stations .....	32
Ambelt® Pulley lagging .....	34
Ambelt® scrapers .....	35
Ambelt® impact bars AmPact .....	37
Ambelt® sidewalls .....	38

---

### Repair material 40 – 45

Permaflex .....	42
Helmitin® cold bonding systems, steel primer and cleaner .....	44
Product overview Helmitin® .....	45

---

---

Ambelt®  
**Conveyor belts**





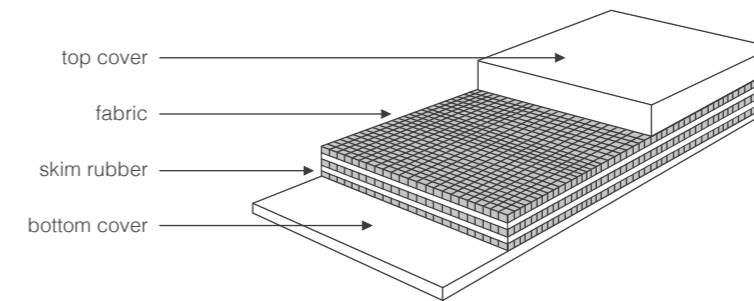
## Textile conveyor belts

Ambelt® textile conveyor belts made of EP or PP-textiles are used for conveying bulk material. Due to the high tensile strength and stability the belts are suitable for long distance conveyors. Ambelt® conveyor belts are strictly manufactured according to DIN 22102.

The Ambelt® product portfolio includes diverse qualities and assemblies as well as cross rigid XE-fabric.

### Application areas

- Mining industry
- Chemical sector
- Iron and steel industry
- Ports and transshipment operations
- Wood industry
- Coal-fired power plants
- Recycling industry
- Sand and gravel industry
- Stone quarries
- Cement plants



### Technical Data

Ambelt® provides textile conveyor belts in the following specifications and qualities.

carcass	tensile strength (N/mm <sup>2</sup> )	textile layers	thickness of covers (in mm)		
			top	bottom	width
EP / PP	200	1 - 3	1 - 40	0 - 40	300 - 4500
	250				
	315				
	400	2 - 6			
	500				
	630				
	800				
	1000				
	1250				
	1500				
	1600				
	3150				

	Y quality	X quality	Z quality	N quality	W quality
tensile strength	≥ 20 N/mm <sup>2</sup>	≥ 25 N/mm <sup>2</sup>	≥ 15 N/mm <sup>2</sup>	≥ 17 N/mm <sup>2</sup>	≥ 18 N/mm <sup>2</sup>
abrasion	≤ 150 mm <sup>3</sup>	≤ 120 mm <sup>3</sup>	≤ 250 mm <sup>3</sup>	≤ 150 mm <sup>3</sup>	≤ 90 mm <sup>3</sup>
elongation at break	≥ 400%	≥ 450%	≥ 350%	≥ 350%	≥ 450%





## Oil resistant conveyor belts

Grease, mineral oil and solvents may cause damages to normal textile conveyor belts. Even a short exposure to these substances may effect a swelling of the cover rubber. Therefore, Ambelt® offers oil resistant belts. The special rubber compound of the material reduces wear and increases the efficiency of the production.

Ambelt's® product portfolio comprises the qualities MOR (medium oil resistant) and OR (oil resistant). The product specifications are also available in cross rigid XE-fabric.

### Application Areas

- Chemical industry
- Fertilizer industry
- Iron and steel industry
- Feed industry
- Grain silo
- Glass industry
- Wood industry
- Metal processing industry
- Recycling industry

### Technical data

	MOR quality	OR quality
tensile strength	≥ 14 N/mm <sup>2</sup>	≥ 16 N/mm <sup>2</sup>
abrasion	≤ 200 mm <sup>3</sup>	≤ 160 mm <sup>3</sup>
elongation at break	≥ 300%	≥ 350%

oil resistant conveyor belts in use in a recycling plant



## Heat resistant conveyor belts

Heat resistant conveyor belts are highly resistant to hot material such as cement, steel or sand.

The cover rubber of a conveyor belt consists of a special rubber compound featuring high adhesive strength, elongation at break and excellent thermal protection force. Using diverse elastomers heat resistance varies.

Heat resistant Ambelt® conveyor belts manufactured according to DIN 22102 are able to convey material with a constant temperature of 200°C – short runs also up to 250°C.

### Application areas

- Chemical sector
- Fertilizer industry
- Iron and steel industry
- Foundries
- Glass industry
- Metalworking industry
- Waste incineration
- Cement plants

### Technical Data

	Heat 150°	Heat 180°	Heat 200°
tensile strength	≥ 14 N/mm <sup>2</sup>	≥ 14 N/mm <sup>2</sup>	≥ 13 N/mm <sup>2</sup>
abrasion	≤ 250 mm <sup>3</sup>	≤ 250 mm <sup>3</sup>	≤ 200 mm <sup>3</sup>
elongation at break	≥ 400%	≥ 400%	≥ 350%
const. operating temp.	≤ 150°	≤ 180°	≤ 200°



## Flame-retardant conveyor belts

One of the major risks during a production process is fire. Flame-retardant conveyor belts may therefore be used to reduce or even avert damages to persons and property in case of fire.

Ambelt® provides you with the quality according to your demand

- K quality: flame-retardant with cover plate
- S quality: flame-retardant with or without cover plate
- V quality: self-extinguishing

### Application Areas

- Mining industry
- Iron and steel industry
- Ports and transshipment operations
- Power plants

### Technical data

	K quality	S quality	V quality
tensile strength	≥ 20 N/mm <sup>2</sup>	≥ 20 N/mm <sup>2</sup>	≥ 17 N/mm <sup>2</sup>
abrasion	≤ 150 mm <sup>3</sup>	≤ 150 mm <sup>3</sup>	≤ 200 mm <sup>3</sup>
elongation at break	≥ 450%	≥ 450%	≥ 350%





## Chevron belts

For gradient angles of more than 18°, bulk material cannot be transported using ordinary textile conveyor belts. Chevron conveyor belts are used instead. As there are many different application areas, flow rates and operational specifications Ambelt® provides an abundant portfolio of open and closed profile types. For individual client requests regarding the height or type of profile, tailor-made solutions can be realized.

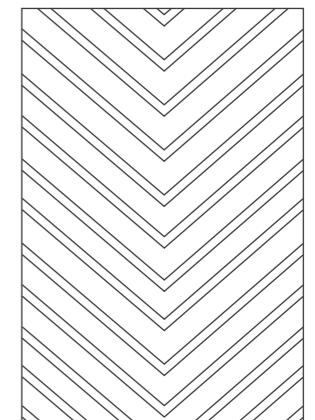
Ambelt® also provides chevron belts in cross-rigid XE fabric, heat resistant, flame-retardant as well as oil resistant quality.

### Application areas

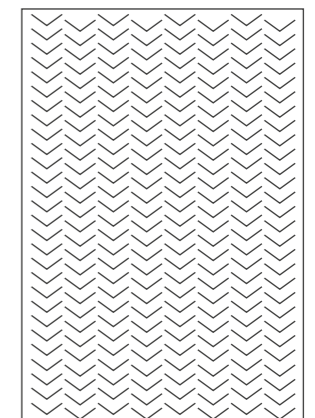
- Ports and transshipment operations
- Wood industry
- Smelteries
- Coal-fired power plants
- Coal industry
- Agriculture
- Recycling industry
- Sand and gravel industry
- Stone quarries
- Cement plants

### profile heights 6 – 12 mm

height of chevron (mm)	width of chevron (mm)	distance bw chevrons	width of belt (mm)
<b>Ambelt® chevron type V3</b>			
3	600	100	600 – 800
<b>Ambelt® chevron type V5</b>			
5	620	100	620 – 820
5	300 – 1200	100	300 – 1200
<b>Ambelt® chevron type V6</b>			
6	500 – 1000	80	500 – 1200
6	500 – 1200	150	500 – 1200
6	650	100	650 – 900
6	1000	100	1000 – 1200
6	1200	100	1200 – 1600
<b>Ambelt® chevron type V10</b>			
10	600 – 1400	76	600 – 1400



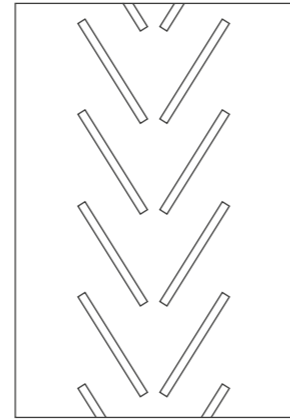
height of chevron (mm)	width of chevron (mm)	distance bw chevrons	width of belt (mm)
<b>Ambelt® chevron type multi-V6</b>			
6	600 – 1400	76	600 - 1400



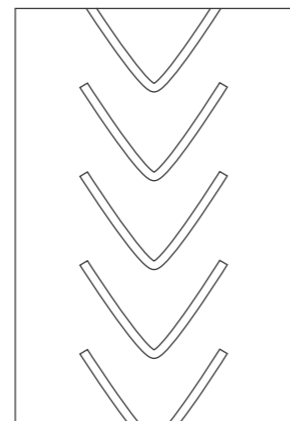


### profile height 15 mm

height of chevron (mm)	width of chevron (mm)	distance bw chevrons	width of belt (mm)
Ambelt® chevron type V 15 – standard open			
15	300	146	400 – 550
	380	250	450 – 850
	385	250	400 – 1000
	450	225	600 – 650
	600	328	700 – 1200
	600	250	650 – 1000
	750	250	800 - 1200



height of chevron (mm)	width of chevron (mm)	distance bw chevrons	width of belt (mm)
Ambelt® chevron type V 15 – standard closed			
15	330	250	400 – 800
	450	300	500 - 1000

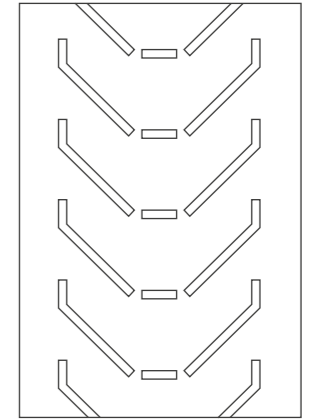


height of chevron (mm)	width of chevron (mm)	distance bw chevrons	width of belt (mm)
Ambelt® chevron type V 15 - wide			
15	300 - 1200	125	300 - 1200

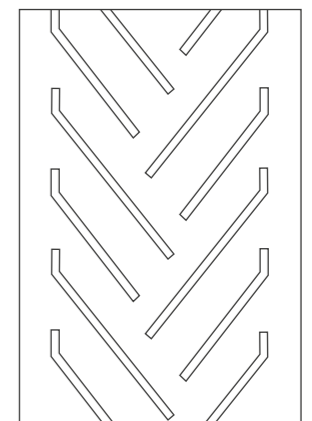


### profile height 15 mm

height of chevron (mm)	width of chevron (mm)	distance bw chevrons	width of belt (mm)
Ambelt® chevron belt type C 15 - standard			
15	500	340	550 - 800

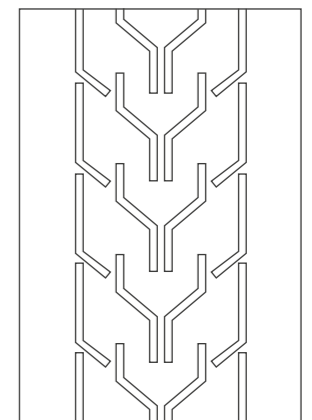


height of chevron (mm)	width of chevron (mm)	distance bw chevrons	width of belt (mm)
Ambelt® chevron belt type C 15 - wide			
15	750	300	900 - 1000



### profile height 17 mm

height of chevron (mm)	width of chevron (mm)	distance bw chevrons	width of belt (mm)
Ambelt® chevron belt type Y 17			
17	300	330	400 – 800
	440	330	500 – 1000
	550	330	600 – 1000
	630	330	700 – 1000
	750	330	850 – 1200
	950	330	1050 - 1400

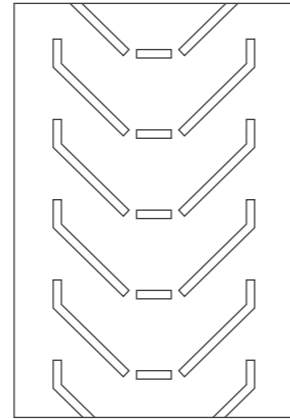




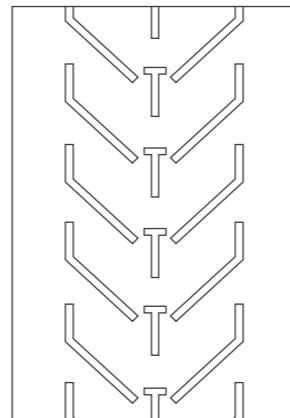


### profile height 25 mm

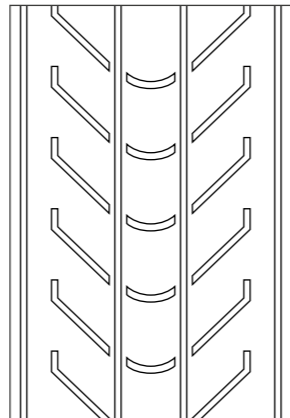
height of chevron (mm)	width of chevron (mm)	distance bw chevrons	width of belt (mm)
Ambelt® chevron belt type C25			
25	450	330	500 – 1000
	550	330	600 – 1000
	750	330	850 – 1200



height of chevron (mm)	width of chevron (mm)	distance bw chevrons	width of belt (mm)
Ambelt® chevron belt type CT25			
25	450	250	500 – 800
	550	250	600 – 1200
	450	330	600 – 800
	550	330	600 – 800

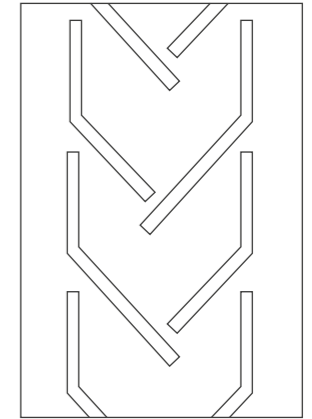


height of chevron (mm)	width of chevron (mm)	distance bw chevrons	width of belt (mm)
Ambelt® chevron belt type CL25			
25	1350	500	1400

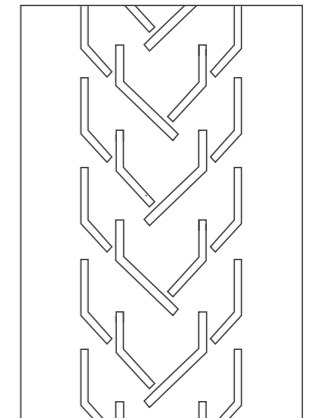


### profile height 32 mm

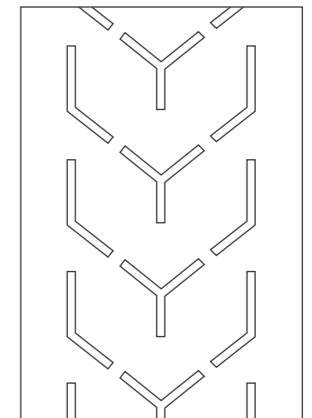
height of chevron (mm)	width of chevron (mm)	distance bw chevrons	width of belt (mm)
Ambelt® chevron type C 32 - slim			
32	460	330	550 - 1000



height of chevron (mm)	width of chevron (mm)	distance bw chevrons	width of belt (mm)
Ambelt® chevron type C32			
32	580	330	600 – 800
	630	330	650 – 900
	750	330	850 - 1400



height of chevron (mm)	width of chevron (mm)	distance bw chevrons	width of belt (mm)
Ambelt® chevron type Y32			
32	450	255	500 – 800
	600	330	700 – 1000
	800	330	900 - 1200





## Sidewall belts

Sidewall belts are suitable for horizontal to vertical transport (up to 90°) of bulk material. This can reduce the number of transfer points during operation and has a positive outcome in terms of producing in an energy and capital saving mode of operation. Ambelt® offers its customers a large portfolio of possible combinations of cleats and sidewalls in different height up to 500 mm.

Sidewalls and cleats may be manufactured with re-inforced textile layers and connected with screws if required. Furthermore, Ambelt® offers sidewall conveyor belts in cross rigid XE design as well as with steel breaker.

Because sidewall belts are always custom-made products, please contact the Ambelt® service team for receiving an individual offer that meets your requirements.

### Overview

- hot vulcanisation of cleats and sidewalls on the base belt
- maximum cleat and sidewall height 500 mm
- maximum width of belt 4500 mm
- delivered as endless belt or open length

### Application areas

- Automotive
- Mining
- Foundries
- Power plants
- Recycling industry
- Sand and gravel industry
- Stone quarries

### Cleat type



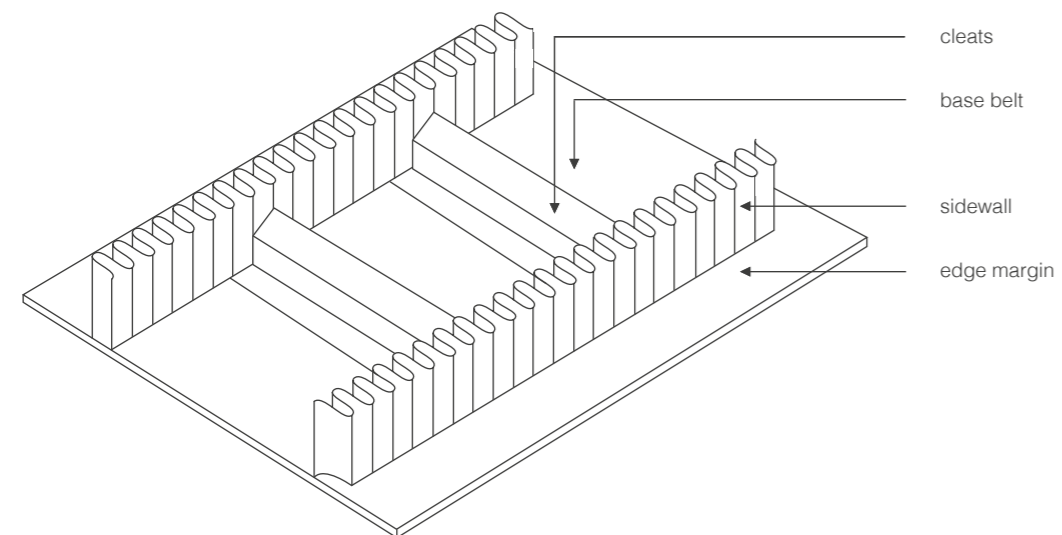
type T



type C



type TC







## Sliding conveyor belts

Sliding conveyor belts are operated on sliding tables and are always used wherever conveyors do not work with a rolling structure for technical reasons. Ambelt® sliding belts are always manufactured according to DIN 22102. Compared to standard conveyor belts, they have a lower friction between the belt and the framework. This minimizes the wear on the conveyor belt and increases customer efficiency.

Ambelt® also provides oil resistant belts and cross-rigid XE specifications.

### Application areas

- Airports
- Wood industry
- Food industry
- Parcel services
- Recycling plants
- Packaging industry

Sliding belt in use



## Elevator belts

Elevator belts optimize transportation in confined spaces. Ambelt® elevator belts with EP-layers are produced according to strict regulations of the DIN22102 and DIN22104 standards. Elevator belts are highly qualified for upright conveyance of bulk material. For high performance elevators such as in the cement industry, steel cord conveyor belts are used in diverse designs.

Special designs according to customers' specifications may be realized any time. The elevator belts can be delivered ready-to-install including mechanical fasteners, bucket protection sheets as well as punched holes for bucket installation.

### Application areas

- Iron foundries
- Coal-fired power plants
- Agriculture
- Food production
- Recycling industry
- Cement plants



## Non-standard conveyor belts

Ambelt® offers standard belts but also special belts according to customers' specifications. We are happy to provide you support for your technical enquiries.

### Steel breaker belts

Sharp-edged goods and the impact of goods under unfavourable conditions may cause expensive longitudinal rips and breakthroughs in the belt. In order to avoid this, Ambelt® offers special steel breaker belts featuring a cutting protection layer on top of the textile carcass (rip stop). Upon enquiry Ambelt® offers diverse types and qualities.

### Application areas Metal breaker belts

- Iron and steel industry
- Foundries
- Stone quarries
- Cement plants

### Supergrip belts

Ambelt® Supergrip belts are manufactured with a special top cover surface having a structure which avoids slipping of the material transported on horizontal or inclining belts. These belts are available in normal but also as cross-rigid XE design.

### Application areas Supergrip belts

- Airports
- Amusement parks
- Beverage industry
- Wood transport (e.g. wood chips)
- Parcel centres
- Passenger transportation

### FDA approved belts

Ambelt® FDA approved belts are mainly used in the sugar and food industry but also in the colour and paint production. Ambelt® is looking forward to advise you regarding the suitable belt according to your specifications and requirements.



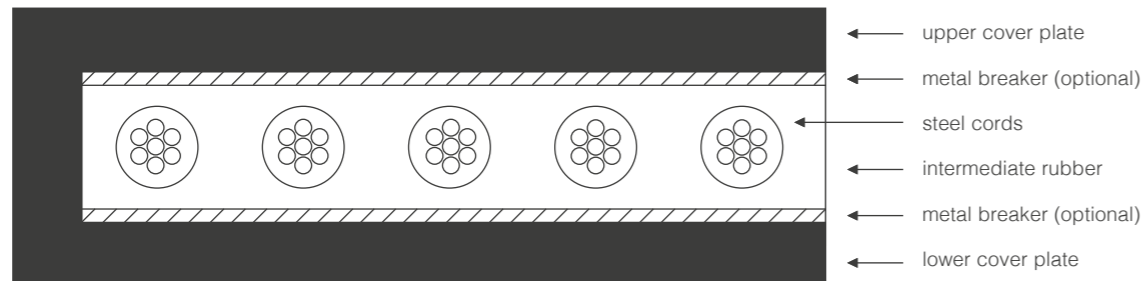
## Steel cord conveyor belts

Ambelt® steel cord conveyor belts are used to transport high volume flows over long distances. Thanks to the high tensile strength these belts are suitable for rough working conditions.

Ambelt® steel cord conveyor belts are strictly produced according to the DIN 22131 and ISO 15236 standards. The standard product portfolio comprises the qualities X, Y, K and V.

### Application areas

- Mining and salt extraction
- Iron and steel industry
- Ports and transshipment operations
- Coal mines
- Power plants
- Surface mining



	ST1000	ST1250	ST1600	ST2000	ST2500	ST3150	ST3500	ST4000	ST4500	ST5000	ST5400
tensile strength (N/mm)	1000	1250	1600	2000	2500	3150	3500	4000	4500	5000	5400
max. cord diameter (mm)	4.1	4.9	5.6	5.6	7.2	8.1	8.6	8.9	9.7	10.9	11.3
cord distance (mm) +/- 1,5	12	14	15	12	15	15	15	15	16	17	17
minimum thickness of covers (mm)	4.0	4.0	4.0	4.0	5.0	5.5	6.0	6.5	7.0	7.5	8.0
width (mm) +/-	tolerance (mm) +/-	number of steel cords									
500	5	39	34								
650	7	51	44	40	51	40	40	40	40	37	
800	8	64	55	50	64	50	50	50	50	46	43
1000	10	81	69	64	81	64	64	64	64	59	55
1200	10	97	84	77	97	77	77	77	77	71	66
1400	12	114	98	90	114	90	90	90	90	84	78
1600	12	131	112	104	131	104	104	104	104	96	90
1800	14	147	127	117	147	117	117	117	117	109	102
2000	14	164	141	130	164	130	130	130	130	121	113
2200	15	181	155	144	181	144	144	144	144	134	125
2400	15	197	169	157	197	157	157	157	157	146	137
2600	15	214	184	170	214	170	170	170	170	159	149
2800	15	231	198	184	231	184	184	184	184	171	161
3000	15	247	212	197	247	197	197	197	197	184	172
3200	15	264	227	210	264	210	210	210	210	196	184



PVC belts with sidewalls

## Light duty conveyor belts

Ambelt® light duty conveyor belts are generally used for short to medium transportation distances and allow transportation of bulk and pieces also in narrow production areas, e. g. in the food industry or in logistic centres.

We offer you a solution for almost every application area. The product portfolio complies light conveyor belts made of PU, PVC and other material. According to your requirements with cleats and sidewalls – with or without textile layers as well as for oil resistant and FDA applications.

### Application areas

- Glass industry
- Wood industry
- Food industry
- Logistic centres and parcel services
- Recycling industry
- Brick factories
- Sugar industry

### Types of connections according to your specifications or our recommendation

- Stepped finger joints
- Punched finger joints
- Mechanical joints
- Two or multilayered stepped connection
- Polyester zip connections
- Overlap splices



---

Ambelt®  
**Wear protection**



# Ambelt® 45, 65 and 60 Super

Ambelt® delivers a wide product range of different wear protection products.

### Overview

- protects equipment and construction parts as well as components against wear
- Ambelt® offers wear resistant rubber sheets in different qualities and thickness of 2 - 50 mm
- on demand with or without contact layer
- customer specific colours, roll length and width available on short notice

### Specifications of Ambelt® standard wear protection products

		Ambelt® 45°	Ambelt® 65°	Ambelt® 60° Super
	unit	quality		
<b>general information</b>				
colour*		red	black	black
roll length*	m	10	10	10
roll width*	mm	1400	1400	1400
<b>elastomers</b>				
polymers		NR	NR/SBR	NR/SBR
spec. weight	g/cm³	1.05	1.16	1.16
hardness	shore A	45°	65°	60°
<b>technical characteristics</b>				
tensile strength	Kp/cm²	200	160	180
elongation at break	%	550	320	520
tear resistance	Kp/cm	30	40	55
abrasion	mm³	< 50	< 120	< 85
operating temp.	°C	-25 / +80	-20 / + 80	-25 / + 80

\* available in customer specific colours, roll length and width



# Ambelt® Para and Para Super

Ambelt® supplies wear protection rubber Para in two different qualities with or without contact layer.

### Your advantages at a glance

- extra abrasion-resistance
- outstanding elongation at break values

### Application examples

- Discharge hoses e.g. in the cement industry
- Compensators

	unit	Para	Para Super
<b>general information</b>			
colour		Beige	Karamell
length of roll*	m	10	10
width of roll*	mm	1400	1400
<b>elastomers</b>			
polymers		NR	NR
specific weight	g/cm³	1.18	0.95
hardness	Shore A	45°	38°
<b>technical characteristics</b>			
tensile strength	Kp/cm²	140	280
elongation at break	%	700	600
tear resistance	Kp/cm	25	33
abrasion	mm³	< 105	< 60
operating temperature	°C	-30 / +80	-30 / +80

\* availability of customer specific roll length and roll width





## Ambelt® Prema Super

Ambelt® Prema Super is a wear protection rubber of highest quality. It features a high elongation at break and tear resistance as well as an excellent weather resistance. Ambelt® Prema Super is available with or without contact layer.

	unit	quality
<b>general information</b>		
colour*		yellow
roll length*	m	10
roll width*	mm	1400
<b>elastomers</b>		
polymers		NR
specific weight	g/cm <sup>3</sup>	1.00
hardness	shore A	38°
<b>technical characteristics</b>		
tensile strength	Kp/cm <sup>2</sup>	275
elongation at break	%	600
tear resistance	Kp/cm	34
abrasion	mm <sup>3</sup>	< 60
operating temperature	°C	-30 / +80

\* available in customer specific colours, roll length and width



## Ambelt® dust sealing

Ambelt® dust sealing protects your equipment from dust and dirt. No matter if screening machines, feeding trays or slides, this extra-light, flexible and elastic product may serve you to run your production flow smoothly and more economically. Ambelt® dust sealing does not only protect from dust and dirt but also reduces noise effectively.

### At a glance

- protects conveyor systems from dust and dirt at transition points
- reduces noise emissions
- your choice: normal or heat resistant quality

	unit	standard	heat
<b>general information</b>			
colour		black	black
length of roll*	m	20	20
width of roll*	mm	1,400	1,400
<b>elastomers</b>			
polymers		NR/SBR	EPDM
specific weight	g/cm <sup>3</sup>	1,05(+/- 0,03)	1.11
hardness	Shore A	45(+/- 5°)	35°
<b>technical characteristics</b>			
tensile strength	Kp/cm <sup>2</sup>	150	90
elongation at break	%	600	750
tear resistance	Kp/cm	22	24
abrasion	mm <sup>3</sup>	< 70	< 95
operating temperature	°C	-30 / +80	-25 / + 120

\* availability of customer specific roll length and roll width



## Ambelt® skirting rubber

Skirting rubber is used for tranquilizing the material and for sealing the feeding point. The skirting rubber avoids the drop-down of material in the system periphery.

Ambelt® skirting rubber is offered in rolls in various colours and qualities and is available in the thickness 5 mm to 30 mm and in the height 60 mm to 200 mm.

Ambelt® Extra is our premium quality for extreme operating conditions.

### Technical data skirting rubber

	unit	red standard	red extra	black standard
general information				
colour*		red	red	black
roll length*	m	20	20	20
elastomers				
polymers		SBR	NR	SBR
spec. weight	g/cm <sup>3</sup>	1.31	1.20	1.15
hardness	shore A	50°	45°	60°
technical characteristics				
tensile strength	Kp/cm <sup>2</sup>	55	150	55
elongation at break	%	260	520	225
tear resistance	Kp/cm	24	29	17
abrasion	mm <sup>3</sup>	< 140	< 90	< 100
operating temp.	°C	-30 / +80	-30 / +80	-30 / +80



## Ambelt® Ceramic wear protection sheets

Mosaic ceramic lagging offers a very efficient wear protection for light to medium stress application areas.

The ceramic sheets must be buttjoined and on bigger areas they need to be staggered. Minimal abrasion allows extended lifecycle.

The structure of the contact layer, the rubber back and the ceramic mosaic reduce noise emission during operation.

At standard areas aluminum oxide ceramic with a purity of 92% is applied. The backside of the Ambelt® ceramic lagging sheets is supplied with a special contact layer which facilitates fitting significantly. Ambelt® recommends Helmitin® cold bonding systems to ensure best interplay of products.

### application areas:

- bunkers
- drains
- chutes
- cyclones

Ambelt® ceramic wear protection lagging sheets are available on stock in the measure 500x500x8 (4+4)mm.

We will be glad to also manufacture to our customers' requirements deviating rubber or ceramic thickness.

### technical data

	unit	standard
measure of lagging sheet	mm	500x500
mosaic ceramic	mm	20x20
ceramic thickness	mm	4
total thickness	mm	8
hardness of rubber	Shore A	60°

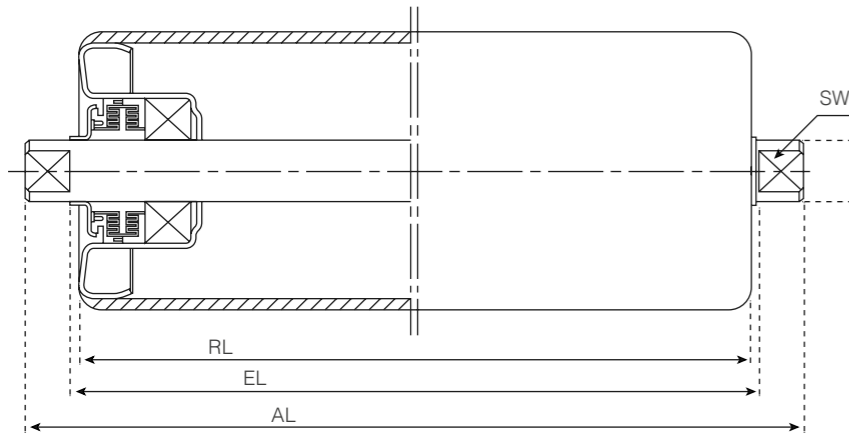
---

Ambelt®  
**Conveyor components**



## Gurtec rollers and roller stations

Ambelt® delivers rollers by Gurtec in all variations and dimensions for various applications. Furthermore, Ambelt® offers roller stations with height of 60 and 100 mm. Standard products are always available on stock.



rollers in use



Ø	categorization of belt width (mm)			measure (mm)			axis end	mass (kg)	
	3 pcs	2 pcs	1 pcs	RL	EL	AL	SW	rotating pcs	total
63,5*1,75	500			200	206	226	15/10	0,92	1,56
	650	400		250	256	276	15/10	1,06	1,82
	800	500		315	321	341	15/10	1,23	2,15
	1000	650		380	386	406	15/10	1,40	2,48
	1200	800		465	471	491	15/10	1,63	2,92
			400	500	506	532	15/13	1,72	3,11
	1600	1000	500	600	606	632	15/13	1,99	3,63
	2000		650	750	756	782	15/13	2,25	4,14
			800	950	956	982	15/13	2,92	5,42
			1000	1150	1156	1182	15/13	3,45	6,45
88,9*2,9	500			200	206	226	15/10	1,77	2,41
	650	400		250	256	276	15/10	2,08	2,84
	650	400		250	256	276	14/10	2,08	2,84
	800	500		315	321	341	15/10	2,48	3,40
	800	500		315	321	341	14/10	2,48	3,40
	1000	650		380	386	406	15/10	2,88	3,96
	1200	800		465	471	491	15/10	3,40	4,69
			400	500	506	532	15/13	3,62	5,00
	1400			530	536	556	15/10	3,80	5,27
	1600	1000	500	600	606	632	15/13	4,23	5,87
	2000		650	750	756	782	15/13	5,15	7,16
			800	950	956	982	15/13	6,38	8,88
			1000	1150	1156	1182	15/13	7,62	10,61
	500		xx	200	206	226	15/10	2,32	2,96
	650	400	xx	250	256	276	15/10	2,74	3,50
	800	500	xx	315	321	341	15/10	3,28	4,20
	1000	650	xx	380	386	406	15/10	3,83	4,91
	1200	800	xx	465	471	491	15/10	4,54	5,83
	1600	1000	500	600	606	632	15/13	5,68	7,31
	2000		650	750	756	782	15/13	6,93	8,94
			800	950	956	982	15/13	8,61	11,11
			1000	1150	1156	1182	15/13	10,29	13,28

exemplary table, further specifications upon request



## Ambelt® Pulley lagging

Rubber laggings are used for drive elements to ensure high friction and therefore to minimize slipping of the belt as well as to ensure straight run of the belt during operation.

Ambelt® pulley lagging consists of high-quality synthetic rubber compounds which makes it first choice for excellent wear and corrosion protection. The mini diamond profile quickly drains off rain water and dirt and therefore increases availability of the conveyor belt system.

Ambelt® pulley lagging mini diamond is supplied with a special contact layer on one side to ensure durable adhesion on the steel surface of the pulley. Ambelt® recommends Helmitin® cold bonding systems to ensure best interplay of products.

Ambelt® pulley lagging mini diamond are available on stock in the measure 2,000mm x 10,000mm and in the thickness 8, 10 and 12mm. Available in customer specific thickness and colours upon request.

	unit	mini diamond 35x20mm
<b>general information</b>		
colour		black
length of roll	m	10
width of roll	mm	2,000
<b>elastomers</b>		
polymers		NR/BR
specific weight	g/cm <sup>3</sup>	1.15
hardness	Shore A	60°
<b>technical characteristics</b>		
tensile strength	%	400
abrasion	mm <sup>3</sup>	< 100



## Ambelt® scrapers

Scrapers serve for the general cleaning of the belt. By installing scrapers you may avoid the sticking of material at your belt surface and increase the lifecycle of your belt remarkably. Furthermore, the pollution of the equipment is reduced to a minimum.

## Sandwich rubber scrapers

For material easy to scrape and for lower belt speed a sandwich rubber scraper is recommended for economic reasons. Sandwich rubber scrapers are made of rubber in the combination hard - soft - hard (65°-47°-65° shore). The exterior surface is made of 65° shore rubber having the hardness to clean the belt, the soft 47° shore core implies the necessary elasticity to endure vibrations.

Common rubber scrapers are directly available from stock in the thickness 15mm, 20mm and 30mm. We are happy to manufacture further measures upon request.

	unit	black/green/black		black/red/black	
colour		black	green	black	red
<b>elastomers</b>					
polymers		NR	SBR	NR	SBR
spec. weight	g/cm <sup>3</sup>	1.30	1.25	1.15	1.20
hardness	shore A	65°	47°	65°	45°
<b>technical characteristics</b>					
tensile strength	Kp/cm <sup>2</sup>	100	135	140	100
elongation at break	%	300	500	350	500
abrasion	mm <sup>3</sup>	< 460 (10N)	< 100 (5N)	< 170 (10N)	< 110 (5N)
operating temp.	°C	-20 / +80		-25 / +80	



## Drum cleaning scraper of hard metal

Drum cleaning scraper of plastic and hard metal for cleaning conveyor belt systems

- application at light to medium-heavy and especially for high endurance conveyor belt systems
- suitable for crowned drums
- high flexibility due to PU and hard metal segments
- also suitable for reverse operations
- belt speed up to 5m/s
- especially for very sticky material or difficult and confined spaces

### Secondary scraper (hard metal)

- the Ambelt® standard belt scraper is used for light to strong pollutions of the conveyor belt
- flexible installation possibilities
- special low installation height

### PU drum scraper

- high-quality PU segments for extraordinary high endurance
- suitable for crowned drums and for reverse operations
- high cleaning performance due to flexible PU segments
- belt speed up to 5m/s
- especially for badly damaged belt surfaces and PVC belts
- extra-suitable for confined spaces thanks to compact design

### Application areas

- Asphalt mixing plants
- Plaster and cement plants
- Glass industry
- Recycling industry
- Sand and gravel industry
- Stone quarries
- Brick factories



hard metal secondary scraper



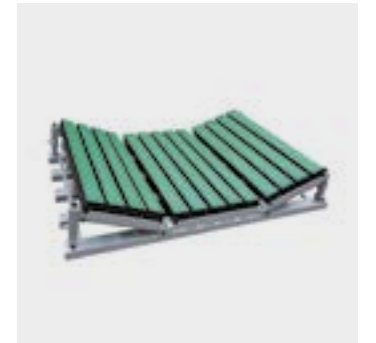
PU drum scraper



## Ambelt® impact bars AmPact

Dust, sharp objects or heavy bulk – conveyor belts are exposed to steady tackles in the loading area. The effect: a poor guidance of the belt, costly repairs, long downtimes and substantial productivity loss. If you don't want to accept this poor state, you need to integrate durable impact bars in your conveyor systems. In doing so, the belt's lifecycle will be increased substantially.

Ambelt® impact bars feature a high level of workmanship and consist of an energy-efficient PE layer with low friction, an impact-absorbing rubber core as well as an aluminium profile for easy installation.

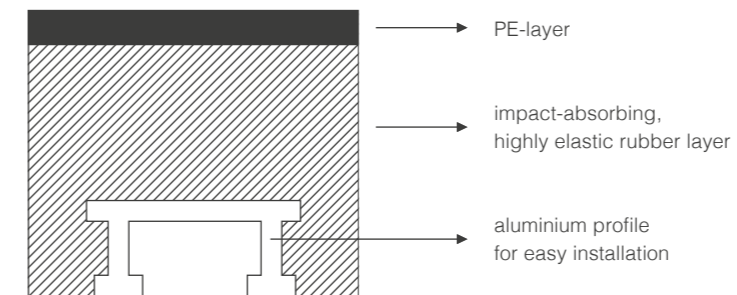


### The following types are directly available on stock

AmPact 50	B x H x L: 100 x 50 x 1220 mm
AmPact 75	B x H x L: 100 x 75 x 1220 mm
AmPact 100	B x H x L: 100 x 100 x 1220 mm
AmPact 50 XL	B x H x L: 100 x 50 x 1500 mm
AmPact 75 XL	B x H x L: 100 x 75 x 1500 mm

Furthermore, Ambelt® delivers the appropriate bolts including washers and nuts in the sizes M16 and M12.

### Technical drawing







## Ambelt® Sidewalls

Sidewalls are often glued on belts to increase the conveyed volume which means significant stress on them. The weight of the conveyed goods is held in cross direction which calls for high stability whereas in the longitudinal direction the sidewalls are stretched and bent especially at the diversions which requires a highly flexible rubber.

Ambelt® sidewalls are marked by a highly wear resistant and flexible rubber quality. Depending on the operational purpose, on the volume to be conveyed and on the customer requirements sidewalls with varying heights are applied. The Ambelt® product range is available from 40mm up to 500mm and can be manufactured with tensile reinforcement.

Heights 140mm+ are recommended with tensile reinforcement only. If the sidewalls need to be screwed with the cleats, a tensile reinforcement is absolutely essential.

### Ambelt® bietet Wellkanten in fünf Qualitäten an:

- standard
- oilresistant
- acid resistant
- flame-retardant
- heat resistant

	unit	standard
general information		
color		black
length of roll	m	50
elastomeres		
rigidity	Shore A	50°
technical characteristics		
tensile strength	MPa	20
elongation at break	%	400
abrasion	mm <sup>3</sup>	150



---

Ambelt<sup>®</sup>  
**Repair Material**



# Ambelt® Permaflex

Ambelt® Permaflex is universally applicable and suitable for the repair of conveyor belts, rubber coating and linings as well as sealing of gaps. Breakthroughs and longitudinal cracks may for example be repaired up to any length. Ambelt® Permaflex consists of a two-component polyurethane and features a fast processing time. After 30 minutes the processed spot may be ground or re-worked. There are two different ways of application depending on the intended purpose: Either by hand or with the help of a spray system.

## Overview

- suitable for repair of conveyor belts, rubber coatings, linings and sealing of gaps
- two-components polyurethane system
- short processing time
- fast, clean and flexible
- dry to the touch after 2 minutes
- may be ground and re-worked after 30 minutes
- free of any volatile substances
- shock-resistant, highly resistant to abrasion
- maximum hardness of 60° shore A
- processing by hand or with the help of a spray system

characteristics	
colour	black
elastomere	polyurethane
tensile strength	≥ 400 %
hardness	60° shore A
abrasion	≤ 120 mm³
elongation at break	1629 PSI



1. Thoroughly clean the working surface



2. Roughen the working surface



3. Prepare with specific PF-84 Primer



4. Remove the buckle and fasten the mixing tip



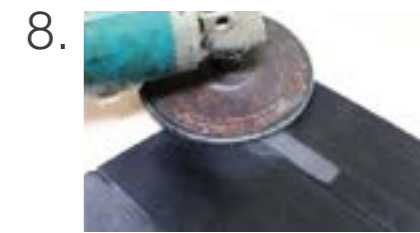
5. Place the cartridge in the spray gun



6. Apply Permaflex repair material



7. Spackle if necessary



8. Spot may be re-worked after 30 minutes



# Helmitin®

## cold bonding systems, steel primer and cleaner

Ambelt® is international sales partner (for Germany, Austria, Switzerland and Eastern Europe) for Helmitin® bonding systems, steel primer and cleaner.

Ambelt® offers the entire product family of Helmitin® cold bonding systems; e.g. Helmitin® 14030. This glue system is an absolute highlight as the applied solvent is non-flammable but nevertheless trichlorethylene-free. Moreover, it may be used beyond the year 2016 according to EU directive in comparison to similar products which may not be used any further.

### Technical data Helmitin® 14030

base	polychloroprene
colour	black
viscosity	approx. 3700 mPas*
density	approx. 1.42 g/cm <sup>3</sup>
hardener additive	5 % swift® hardener (hardly combustible)
pot life	approx. 3 hours
manner of application	filler, paintbrush
consumption	300 – 400 g/m <sup>2</sup>
airing time	10 – 15 minutes
contact bonding time	approx. 30 minutes
setting time	approx. 24 hours
permitted storage time	approx. 12 months
storage and transport conditions	well closed at temp. not below 10 °C
sensitivity to cold	yes, defrostable
flammability	no, hardly combustible
labelling in accordance with Hazardous Substances Ordinance	Xn, N

# Product Overview

## Adhesives, Steel primer and Cleaner

### For rubber conveyor belts and steel linings

#### Adhesives / Primers

Product	Application				Hardener (5%)		Properties		
	Belt Manufacturing		Lining of steel rollers	Lining of tanks	Swift® hardener 9502	Swift® hardener 9503	Hardly flammable	Highly flammable	Other properties
	Sidewall	Belt							
Helmitin® 14030	√	√	√	√	√		√		Good processability at low temperatures. Toluene and trichloroethylene free. Suitable to be used underground.
Helmitin®14026	√	√	√		√			√	High initial and final bonding strength. Toluene free.
Helmitin®14031	√	√	√			√		√	Easy to process at low temperatures. Very high initial bonding strength. Toluene free.
Swift®prime 2903			√	√				√	Very good adhesion to roughened steel. Good combination with above mentioned adhesives. Toluene free.
Swift®col 9254 black								√	Very good adhesion of EPDM profiles on cement. Toluene free.

#### Thinners / Cleaners

Produkt	Used for				Properties		
	Helmitin® 14030	Helmitin® 14026	Helmitin® 14031	Swift® col 9254 black	Hardly flammable	Highly flammable	Other properties
Swift®clean 9041	√				√		Suitable to be used in mining. Free of trichloroethylene.
Helmitin® 676/2		√	√	√		√	Free of toluene and chlorinated hydrocarbons.





## Product overview

### Adhesives, Steel primer and Cleaner

For PVC/PU conveyor belts and power transmission belts

#### Adhesives / Primers

Product type	Product	Hardener (5%)			Properties
		Helmitin® 49631	Helmitin® 500 FB	Hardener F1	
Adhesive	Helmitin®3530/18	√	√	√	Good penetration due to low viscosity. Low activation temperature. Very good tack.
Adhesive	Helmitin®3113/05	√	√	√	High initial bonding strength.
Adhesive	Helmitin®GPV	√	√	√	High viscosity. Very high initial bonding strength. Very high heat resistance.
Primer	Helmitin®3114/05	√	√	√	Low viscous primer for highly absorbent materials.
Primer	Helmitin®15208	√	√	√	Primer for polyurethane and PVC materials.
Primer	Helmitin®T/FL	-	-	-	One-part halogenating primer for the preparation of rubber materials.

#### Thinners / Cleaners

Product	Used for					Application
	Helmitin® 3530/18	Helmitin® 3113/05	Helmitin® 3114/05	Helmitin® GPV	Helmitin® 15208	
Helmitin® 694	√	√	√	√	√	Washing of PVC and polyurethane.

## In Stock

### Adhesives, Steel primer and Cleaner

For rubber conveyor belts and steel linings

Product type	Product	Properties	Article No.	Container
Adhesive	Helmitin® 14030	Hardly flammable, trichloroethylene-free	33-050-00001-100	1 kg can
			33-050-00003-100	3 kg can
	Helmitin® 14026	Flammable, with benzine	33-050-00001-300	0.6 kg can
			33-050-00002-300	2.5 kg can
Swift® col 9254 Black	Highly flammable, thinner: Helmitin® 676/2	33-010-00900-001	15 kg can	
Hardener	Swift®hardener 49502	Highly flammable, for Helmitin® 14030	33-050-00001-400	50 g bottle
			33-050-00002-400	150 g bottle
			33-050-00001-402	30 g bottle
Primer	Swift®hardener 49503	Flammable, for Helmitin® 14026	33-050-00001-401	50 g bottle
			33-050-00002-401	150 g bottle
Primer	Swift®prime 2903	Metal primer	33-050-00001-500	0.7 kg can
Cleaner/Thinner	Helmitin® 676/2	Flammable, trichloroethylene-free	33-050-00004-600	4 kg can
	Swiftclean 9041	Hardly flammable, thinner & cleaner	33-050-00006-100	6 kg can

In cooperation with:



---

# Imprint

Ambelt® conveyor belts is a registered trademark of:



Quaddro Group GmbH  
Kreuztor 2  
38126 Braunschweig  
Germany

Tel.: +49 (0) 531 609 440 211  
Fax.: +49 (0) 531 180 544 57  
E-Mail: [info@ambelt.de](mailto:info@ambelt.de)  
[www.ambelt.de](http://www.ambelt.de)

Year of foundation: 1995



Quaddro Group GmbH  
Kreuztor 2  
38126 Braunschweig  
Germany

Tel.: +49 (0) 531 609 440 211  
Fax.: +49 (0) 531 180 544 57  
E-Mail: [info@ambelt.de](mailto:info@ambelt.de)  
[www.ambelt.de](http://www.ambelt.de)